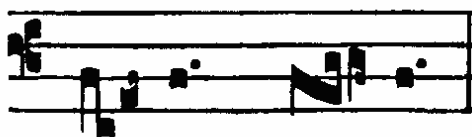


CZECH SANCTUS

S



Anctus, * San-ctus,

ALTO 1
Sa - - - - -

ALTO 2
Sa - - - - -

TENOR
Sa - - - - -

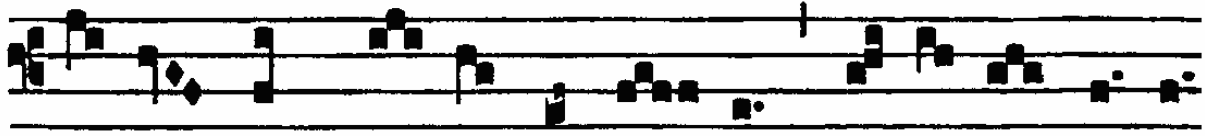
BASS
Sa - - - - -

6
nctus, Do-mi- nus_ De - us_ Sa - - ba - oth,

ctus, Do mi- nus_ De - us Sa - - ba - oth,

- nctus, Do mi- nus_ De - us_ Sa - - ba - oth,

- nctus, Do-mi- nus_ De - us_ Sa - - ba - oth,



Ple-ni sunt cae-li et ter-ra gló-ri-a tu-a

ALTO 1

Ho - - - - - sa-

ALTO 2

Ho - - - - - sa-

TENOR

Ho - - - - - sa-

BASS

Ho - - - - - sa-

Four vocal staves for Alto 1, Alto 2, Tenor, and Bass. Each staff contains a vocal line with lyrics. The lyrics are "Ho - - - - - sa-". The music is in a minor key and features a steady rhythmic pattern.

6

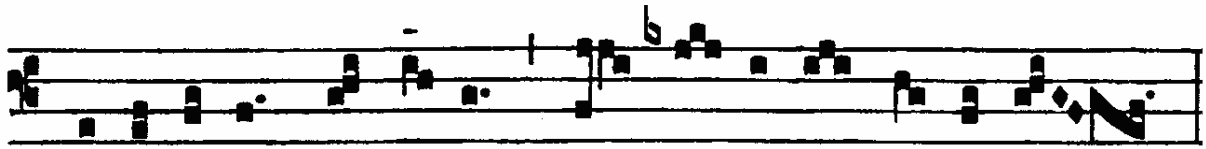
- na in ex-cel - - - - - sis.

- na in ex-cel - - - - - sis.

- na in ex-cel - - - - - sis.

- na in ex-cel - - - - - sis.

Four vocal staves for Alto 1, Alto 2, Tenor, and Bass. Each staff contains a vocal line with lyrics. The lyrics are "- na in ex-cel - - - - - sis.". The music is in a minor key and features a steady rhythmic pattern. A measure rest is present in the Alto 2 part.



Be-ne-díctus qui ve-nit in nó-mi-ne Dó-mi-ni.

ALTO 1

ALTO 2

TENOR

BASS

Ho - - - - - sa-

Ho - - - - - sa-

Ho - - - - - sa-

Ho - - - - - sa-

Four vocal staves for Alto 1, Alto 2, Tenor, and Bass. Each staff has a treble clef and a key signature of two flats. The lyrics "Ho - - - - - sa-" are written below the notes. The music is a simple, rhythmic melody.

6

- na in ex-cel - - - - - sis.

- na in ex-cel - - - - - sis.

- na in ex-cel - - - - - sis.

- na in ex-cel - - - - - sis.

Four vocal staves for Alto 1, Alto 2, Tenor, and Bass. Each staff has a treble clef and a key signature of two flats. The lyrics "- na in ex-cel - - - - - sis." are written below the notes. The music is a simple, rhythmic melody.